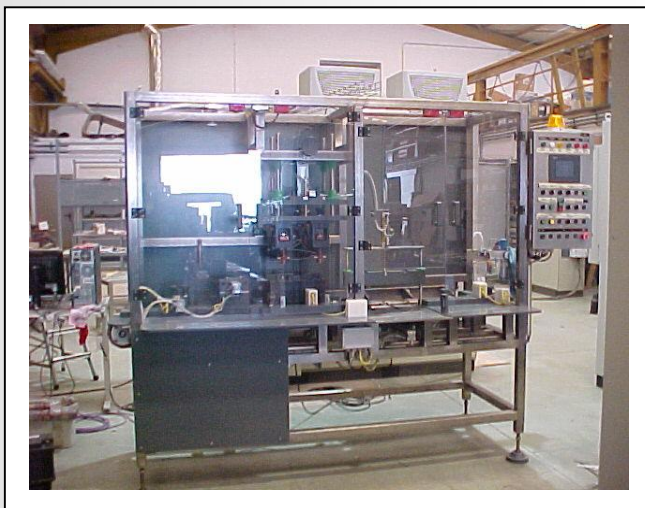


High discharge machine



LIST OF CREDITS

Approximate weight	
600 Kg (machine) + 770 Kg (electrical panel)	
Dimensions	
Wide of machine.	1000 mm
High of machine.	2100 mm
Length of machine.	2950 mm
Wide of electrical panel.	500 mm
High of electrical panel.	2525 mm
Length of electrical panel.	2400 mm
Power supply	
400 Vca / 50 Hz + Neuter + Earth	
Documentation	
Project, manual and declaration of conformity.	
Tack of machine	
6 ó 7 bat / min.	

High discharge machine

- Machine designed for programmable battery high discharge of up to 2000 Amperes.
- Machine composed of 3 positions, one prior to entry, a discharge position, and another for rejection.
- Machine frame constructed in 316 stainless steel and technical plastics such as PVC, polyethylene, polypropylene, etc
- Pneumatic stainless steel FESTO cylinders and antacid coupling.
- It is possible to transport the batteries, using a polyethylene conveyor belt or else by means of pneumatic cylinders. This type of transport is known as pilgrim step.
- RITTAL panel, consisting of 3 modules.
- 5,7" Monochrome touch screen, for programming and displaying all the machine parameters.
- PC and monitoring programs for control of all data required, adjustable and displayable using Profibus DP network.
- Possibility of working with or without PC.
- Program monitoring using PLC SIEMENS S7-series 300_2DP and ET200S field bus.
- Scada control using the PC with National Instruments V6.1 (labview) programs.

